

0614-005

94

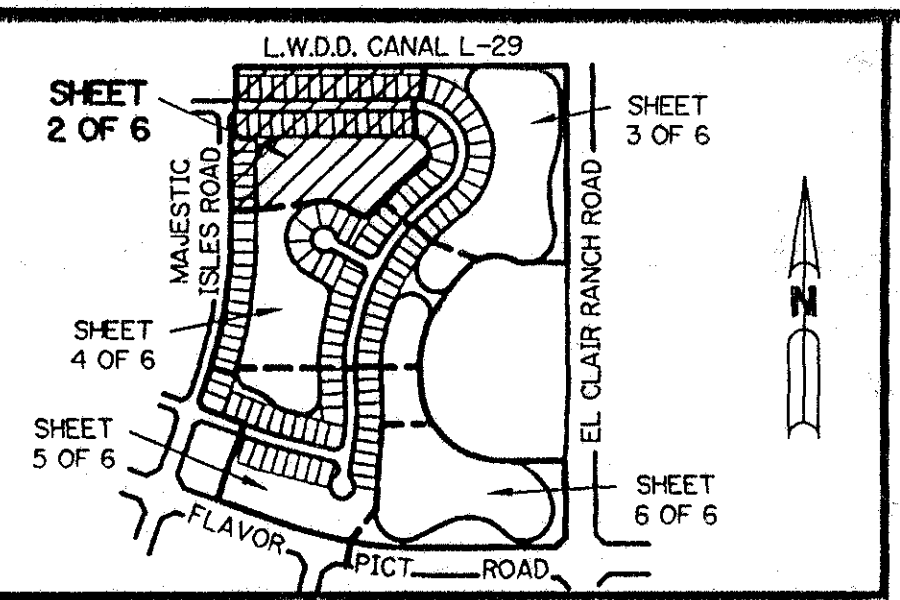
CORAL LAKES IV

BEING A REPLAT OF A PORTION OF TRACT "A" OF THE
PLAT OF CORAL LAKES AS RECORDED IN PLAT BOOK 67, PAGES 197-198,
LYING IN SECTION 3, TOWNSHIP 46 SOUTH, RANGE 42 EAST,
PALM BEACH COUNTY, FLORIDA

APRIL, 1993

SHEET 2 OF 6

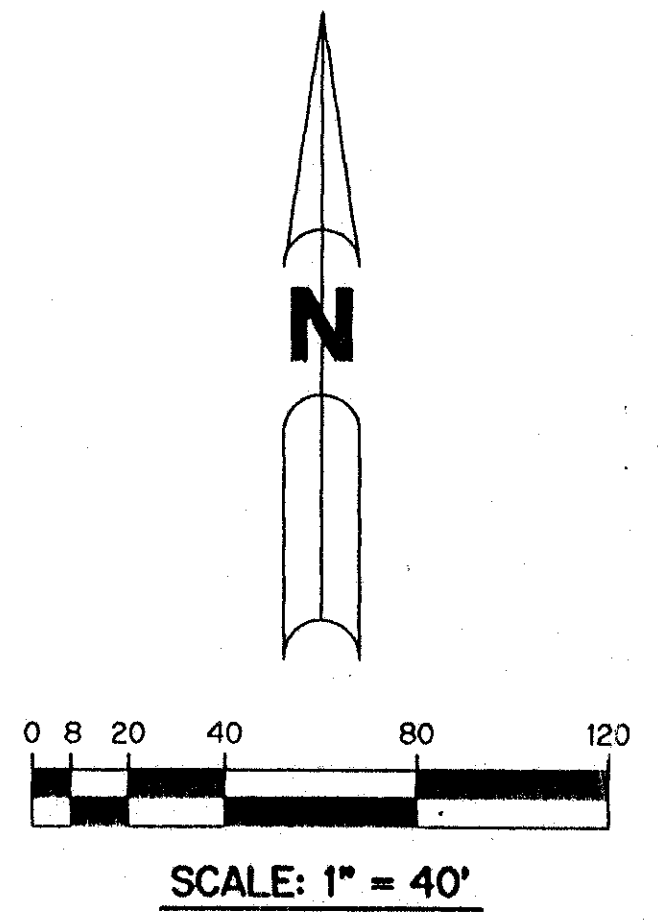
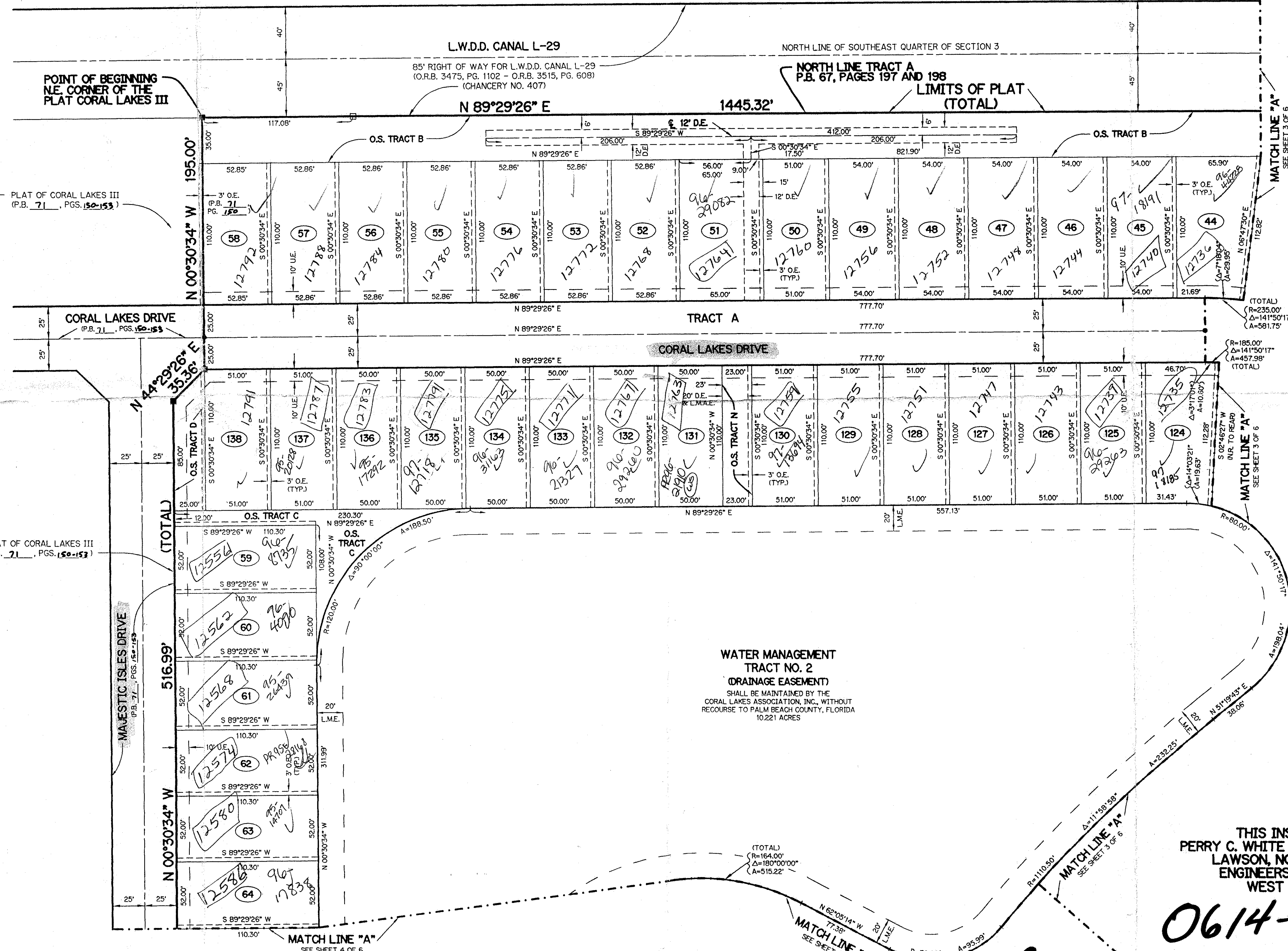
PET. 614-013
ALLO. #0001 (all used up)
NO SCHOOLS D
5/3/93/K



KEY MAP
N.T.S.

PIPERS GLEN PLAT NO. 1
(P.B. 43, PGS. 91-101)

PIPERS GLEN PLAT NO. 1
(P.B. 43, PGS. 91-101)



- LEGEND
- L.A.E. - LIMITED ACCESS EASEMENT
 - R - RADIUS
 - Δ - DELTA ANGLE
 - P.B. - PLAT BOOK
 - P.G.S. - PAGES
 - O.R. - OFFICIAL RECORD
 - P.U.D. - PLANNED UNIT DEVELOPMENT
 - P.L.S. - PROFESSIONAL LAND SURVEYOR
 - N.R. - NOT RADIAL
 - - PERMANENT REFERENCE MONUMENT, PLS #4213
 - - PERMANENT CONTROL POINT, PLS #4213
 - O.E. - OVERHANG EASEMENT
 - U.E. - UTILITY EASEMENT
 - D.E. - DRAINAGE EASEMENT
 - F.E. - FLOOD PLAIN EASEMENT
 - O.S. - OPEN SPACE
 - O.R.B. - OFFICIAL RECORD BOOK
 - R.O.W. - RIGHT-OF-WAY
 - L.M.A.E. - LAKE MAINTENANCE ACCESS EASEMENT
 - L.M.E. - LAKE MAINTENANCE EASEMENT
 - - EXISTING PERMANENT REFERENCE MONUMENT

THIS INSTRUMENT PREPARED BY
PERRY C. WHITE P.L.S. 4213 STATE OF FLORIDA
LAWSON, NOBLE AND ASSOCIATES, INC.
ENGINEERS PLANNERS SURVEYORS
WEST PALM BEACH, FLORIDA

0614-005

CORAL LAKES IV 74/94

SUBDIVISION - Coral Lakes IV
BOOK 74 PAGE 94 FLOOD MAP # 200A
FLOOD ZONE B ZONING AR ZIP CODE 33437
SE
RUD NAME same
21481

TAZ-456